

Michael Tippett School New Build

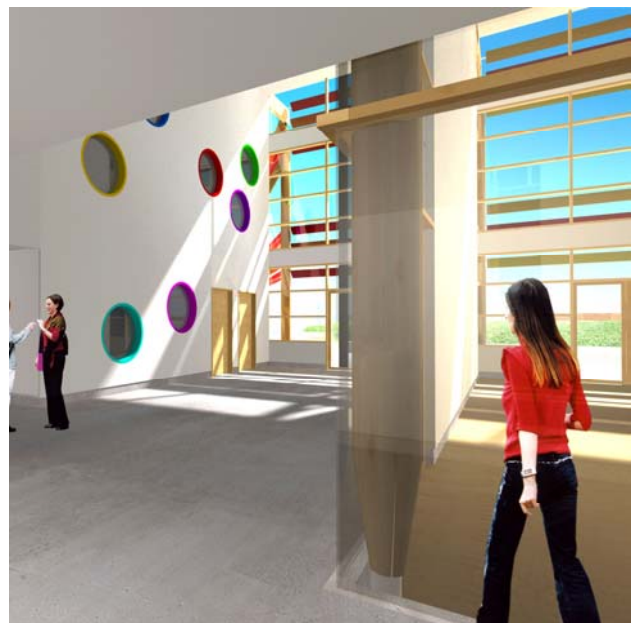


Apollo Education is currently carrying out the design and construction of the first Building Schools for the Future project in London, for Lambeth Council.

The Building Schools for the Future (BSF) Programme is a major government investment programme for secondary schools. Worth £2.2 billion in its first year (2005-2006), it aims to roll out investment to every part of England over 15 waves, subject to future spending decisions.

The new Michael Tippett school will provide state-of-the-art facilities for 80 pupils with profound and multiple learning difficulties between the ages of 11 and 18.

Existing facilities at the Michael Tippett school are currently split between two separate sites – in Kennington and in West Norwood. It was therefore a priority for Lambeth, as one of the local authorities to receive funding in the second wave of the BSF programme, to bring the two sites together, and create a single, quality learning environment.



Photos above and right - how the new school will look



The building will be of a contemporary design with the external walls being principally timber clad with aluminium composite windows and curtain walling.

The building will possess a number of energy efficient features such as a green roof. The roof captures rainfall and moderates the temperature inside the building and has negated the use of less environmentally measures.

A Combined Heat Power (CHP) plant will be provided, which will utilise the excess heat produced from production of electricity for the school, for the heating of the new hydrotherapy pool.

Apollo are currently working on a number of community schemes with the school and the local Popular Youth Association. These include an art project, health and safety talks and the burial of a Time Capsule. We are also working with the Milkwood Residents Association on a joint community newsletter.

As a result of the above Apollo have also set up a community fund where any shared savings from the project will be pooled and used for local initiatives.

Apollo held a ground breaking ceremony on Monday 5th February 2006 which was attended by the school, local councillors and Tim Byles, Chief Executive of Partnerships for Schools.

Photo above - students of the current Michael Tippett School with Councillor Prentice at the ground breaking ceremony

Photo above right - how the new school will look

- Client:** London Borough of Lambeth
Architect: Marks Barfield
Value: £7.6 million
Type of Contract: JCT 2005 Design and Build
Duration of Project: 54 weeks
Completion Date: January 2008
Scope of works:
- Design and build
 - Specialist equipment for SEN provision
 - Green Roof
 - Hydrotherapy Pool
 - Learning garden
 - Community Hall
 - External teaching spaces
 - Combined Heat Plant (CHP) provision
 - Very Good BREEAM rating, demonstrating environmental performance (BREEAM is the most widely used environmental assessment method for buildings).